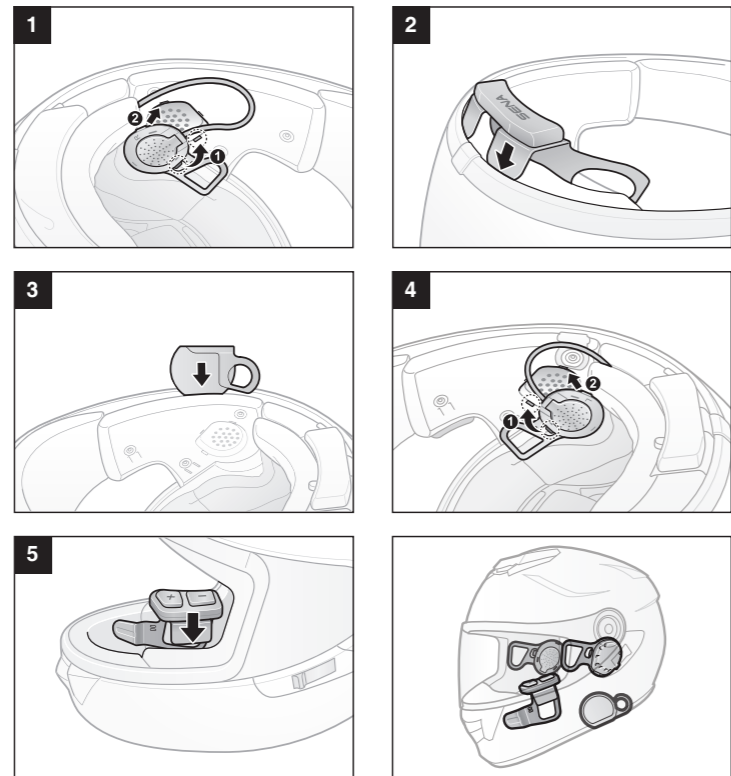
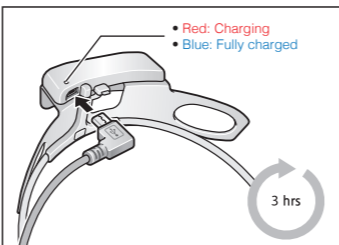


# 10U for Shoei GT-Air Quick Start Guide

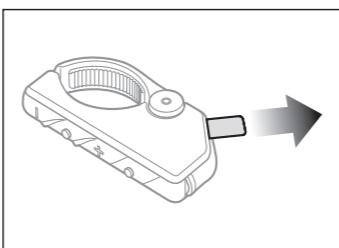
## Installation



## Charging



## Getting Started



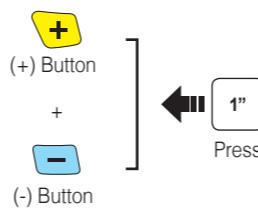
Remove the plastic tape from the battery slot to begin using the Remote Control.

## Button Operation

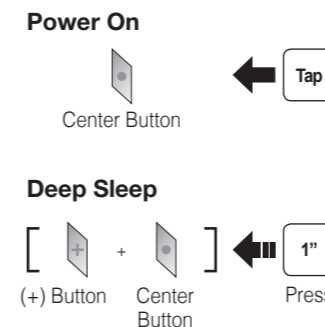


## Power On/Off

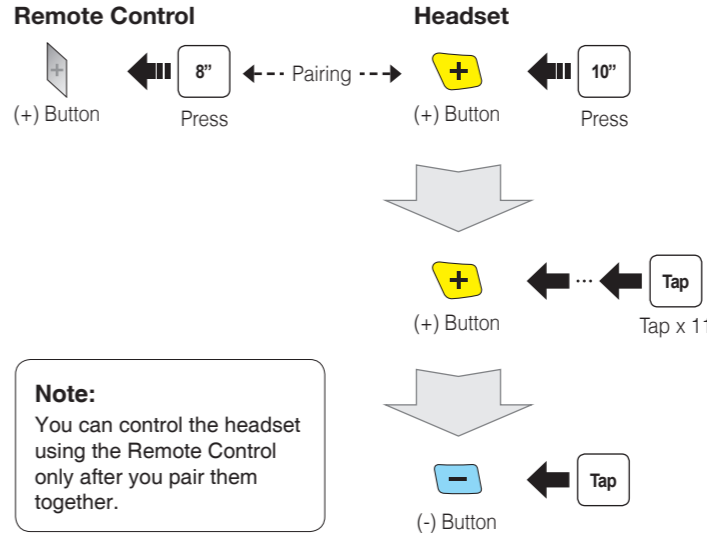
### Headset



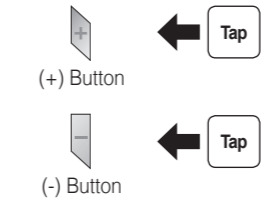
### Remote Control



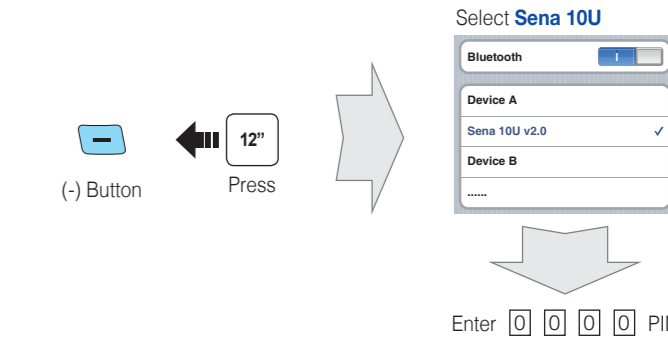
## Remote Control Pairing



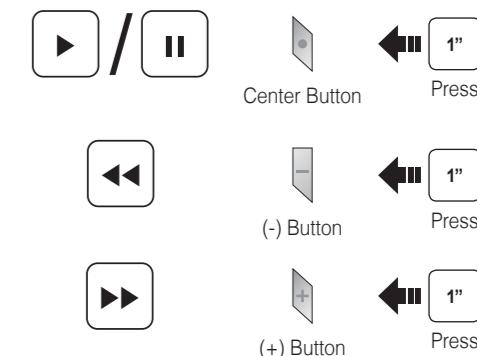
## Volume Adjustment



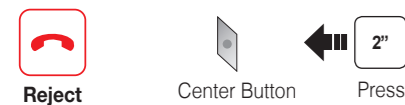
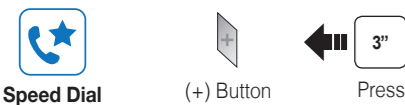
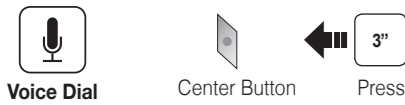
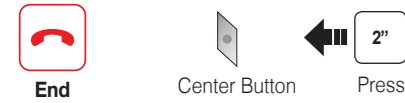
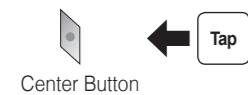
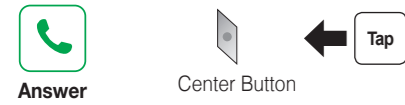
## Phone, Music Pairing



## Music Operation



## Mobile Phone Call Making and Answering



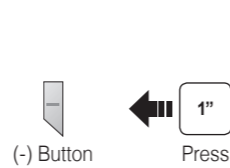
## Intercom Pairing



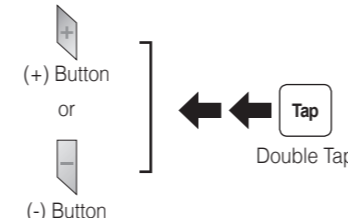
## Intercom Start/End



## Radio On/Off



## Radio Seek Stations



## Radio Scan Up FM Band



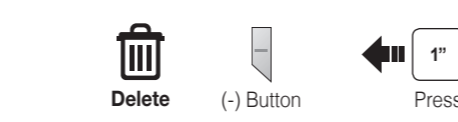
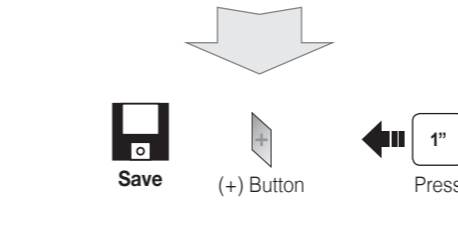
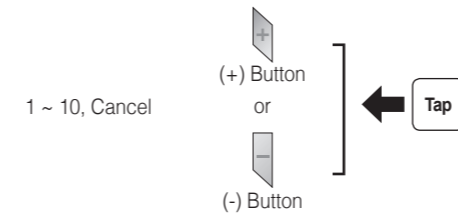
### Save to preset while scanning



## Radio Move to Preset Station



## Radio Save or Delete Preset



## Setting

### Configuration Menu



### Using the Sena Device Manager

Connect the headset to your computer via a USB cable. Launch the Sena Device Manager and click **DEVICE SETTING** to configure the headset settings.

For details about downloading the Sena Device Manager, please refer to the leaflet included in the package.

### Using the Sena Smartphone App

1. On your smartphone, download the Sena Smartphone App for Android or iPhone from Google Play or App Store. Please refer to [www.sena.com](http://www.sena.com) for more details.
2. Pair your smartphone with the headset.
3. Run the Sena Smartphone App. Swipe the screen to the right and tap Setting to configure the headset settings.

## Troubleshooting

### Remote Control Disconnection

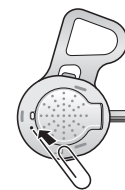
If the Remote Control becomes disconnected with your headset, replace the Remote Control's battery or go through the pairing process again. Meanwhile, you can use the headset control buttons to operate the headset. Please refer to the User's Guide at [www.sena.com](http://www.sena.com) for details on headset control button operations.

### Factory Reset

If you want to restore the 10U to factory default settings, use the Factory Reset in the configuration menu. The headset automatically restores the default settings and turns off.

### Fault Reset

If the 10U is not working properly for any reason, reset by gently pushing the pin-hole reset button located on the left speaker.



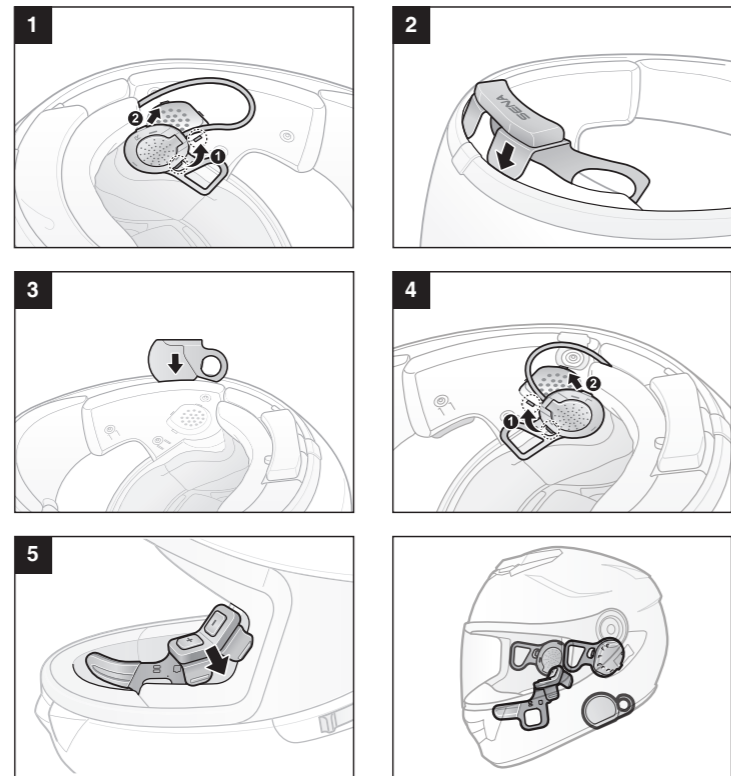
A full version of the manual is downloadable at [www.sena.com](http://www.sena.com).



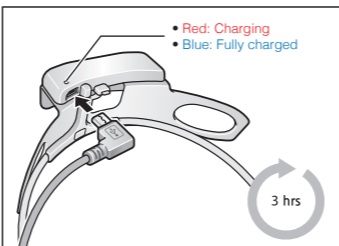
**Sena Technologies, Inc.**  
[www.sena.com](http://www.sena.com)  
 Customer Support: [support.sena.com](mailto:support.sena.com)

# 10U for Shoei Neotec Quick Start Guide

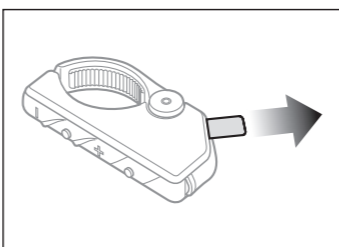
## Installation



## Charging

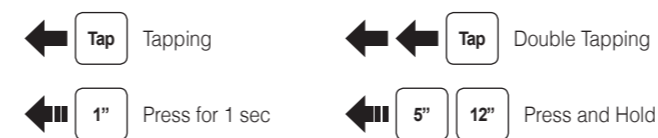


## Getting Started



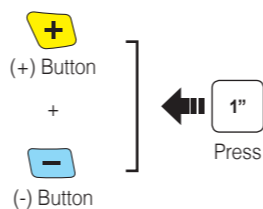
Remove the plastic tape from the battery slot to begin using the Remote Control.

## Button Operation

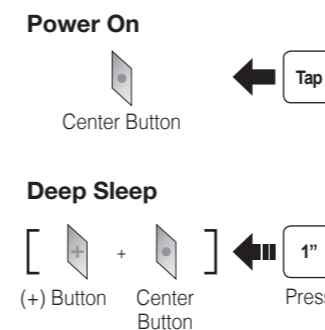


## Power On/Off

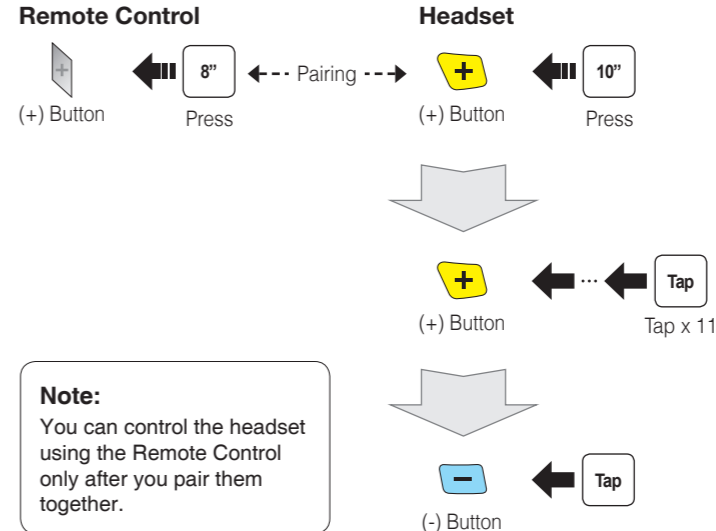
### Headset



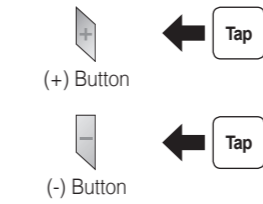
### Remote Control



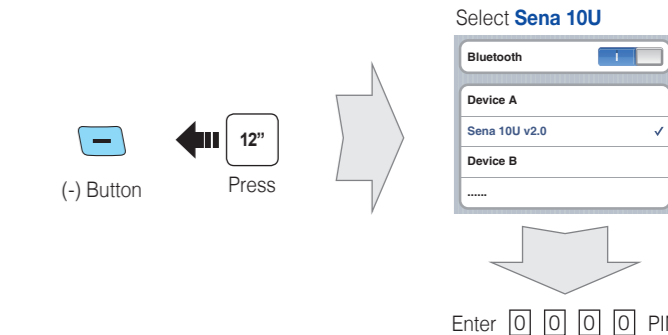
## Remote Control Pairing



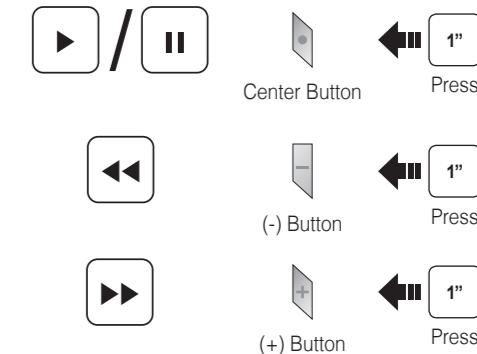
## Volume Adjustment



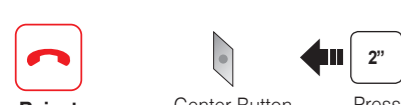
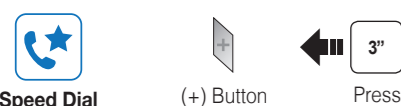
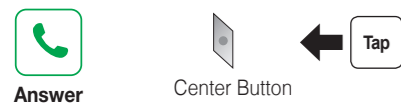
## Phone, Music Pairing



## Music Operation



## Mobile Phone Call Making and Answering



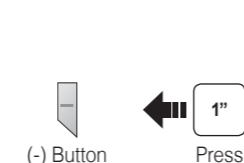
## Intercom Pairing



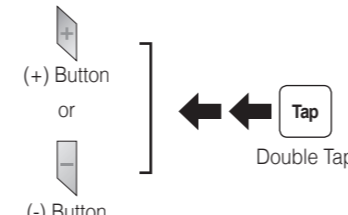
## Intercom Start/End



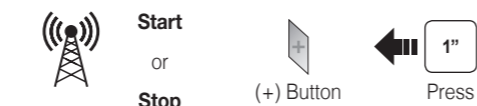
## Radio On/Off



## Radio Seek Stations



## Radio Scan Up FM Band



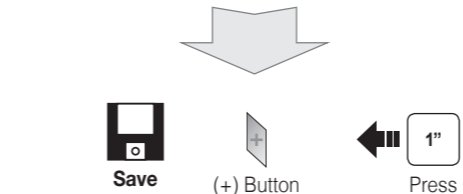
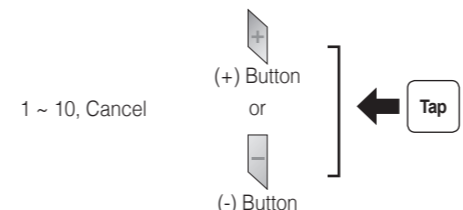
### Save to preset while scanning



## Radio Move to Preset Station



## Radio Save or Delete Preset



## Setting

### Configuration Menu



### Using the Sena Device Manager

Connect the headset to your computer via a USB cable. Launch the Sena Device Manager and click **DEVICE SETTING** to configure the headset settings.

For details about downloading the Sena Device Manager, please refer to the leaflet included in the package.

### Using the Sena Smartphone App

1. On your smartphone, download the Sena Smartphone App for Android or iPhone from Google Play or App Store. Please refer to [www.sena.com](http://www.sena.com) for more details.
2. Pair your smartphone with the headset.
3. Run the Sena Smartphone App. Swipe the screen to the right and tap Setting to configure the headset settings.

## Troubleshooting

### Remote Control Disconnection

If the Remote Control becomes disconnected with your headset, replace the Remote Control's battery or go through the pairing process again. Meanwhile, you can use the headset control buttons to operate the headset. Please refer to the User's Guide at [www.sena.com](http://www.sena.com) for details on headset control button operations.

### Factory Reset

If you want to restore the 10U to factory default settings, use the Factory Reset in the configuration menu. The headset automatically restores the default settings and turns off.

### Fault Reset

If the 10U is not working properly for any reason, reset by gently pushing the pin-hole reset button located on the left speaker.

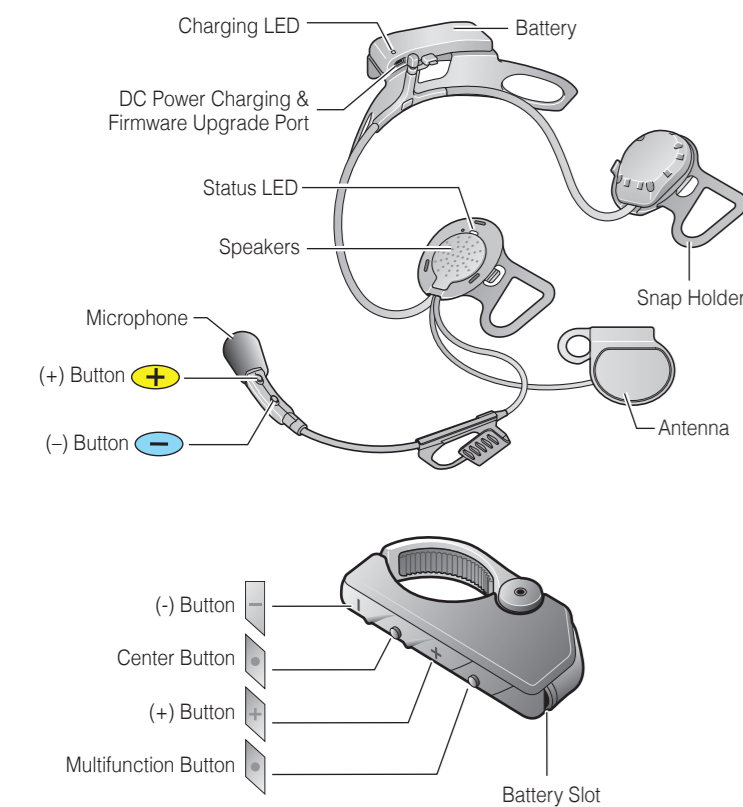


A full version of the manual is downloadable at [www.sena.com](http://www.sena.com).

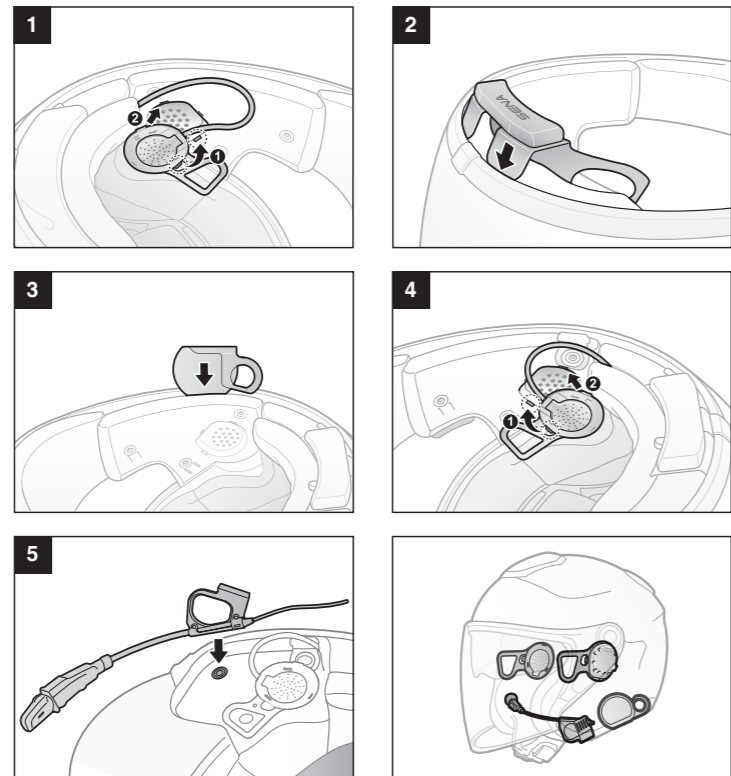


**Sena Technologies, Inc.**  
[www.sena.com](http://www.sena.com)  
 Customer Support: [support.sena.com](mailto:support.sena.com)

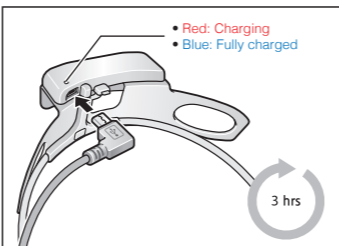
# 10U for Shoei J-Cruise Quick Start Guide



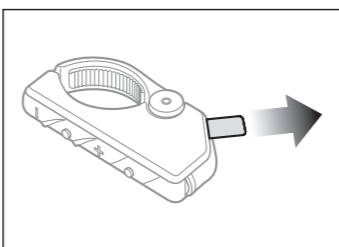
## Installation



## Charging



## Getting Started



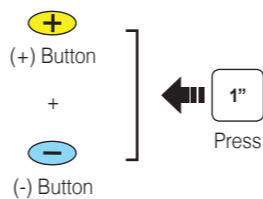
Remove the plastic tape from the battery slot to begin using the Remote Control.

## Button Operation

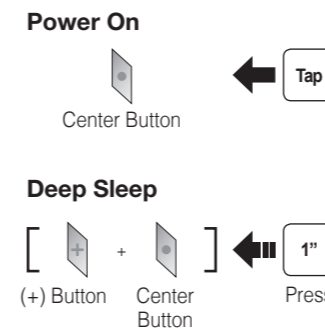


## Power On/Off

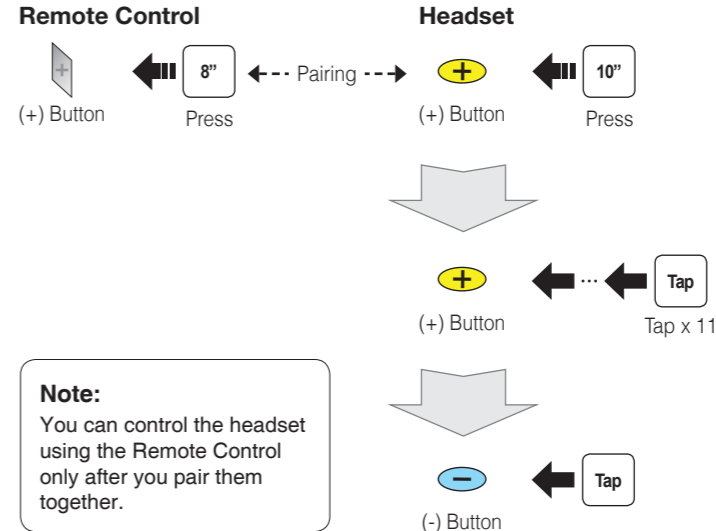
### Headset



### Remote Control

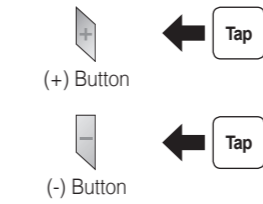


## Remote Control Pairing

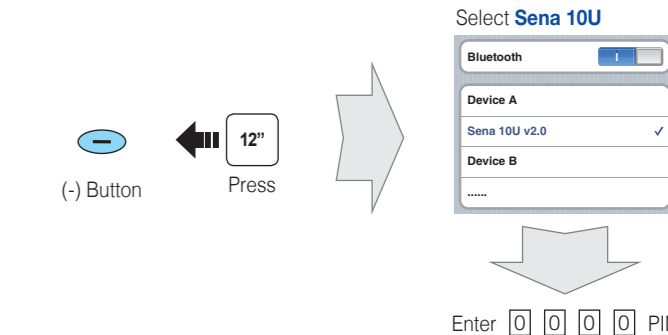


**Note:** You can control the headset using the Remote Control only after you pair them together.

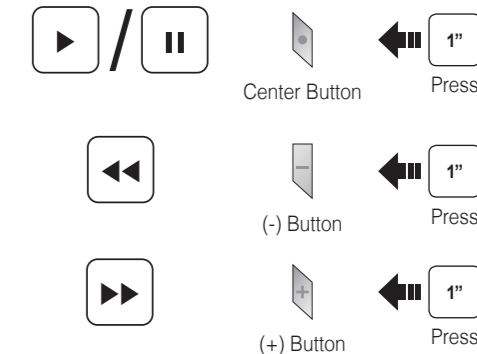
## Volume Adjustment



## Phone, Music Pairing



## Music Operation



## Mobile Phone Call Making and Answering

**Answer**  
Center Button Tap

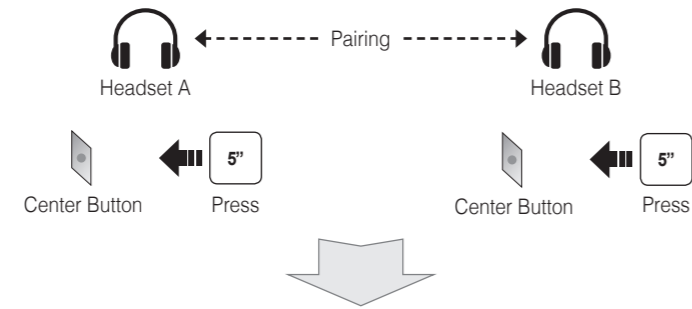
**End**  
Center Button Press 2"

**Voice Dial**  
Center Button Press 3"

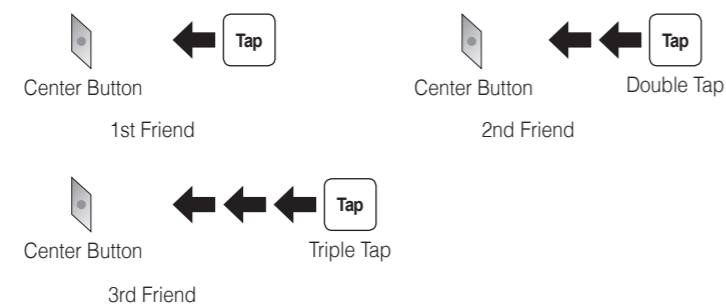
**Speed Dial**  
(+) Button Press 3"

**Reject**  
Center Button Press 2"

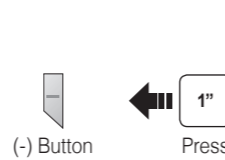
## Intercom Pairing



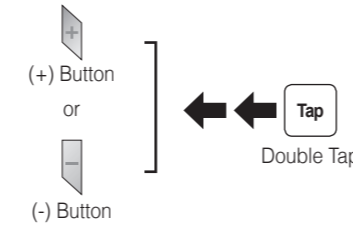
## Intercom Start/End



## Radio On/Off



## Radio Seek Stations



## Radio Scan Up FM Band



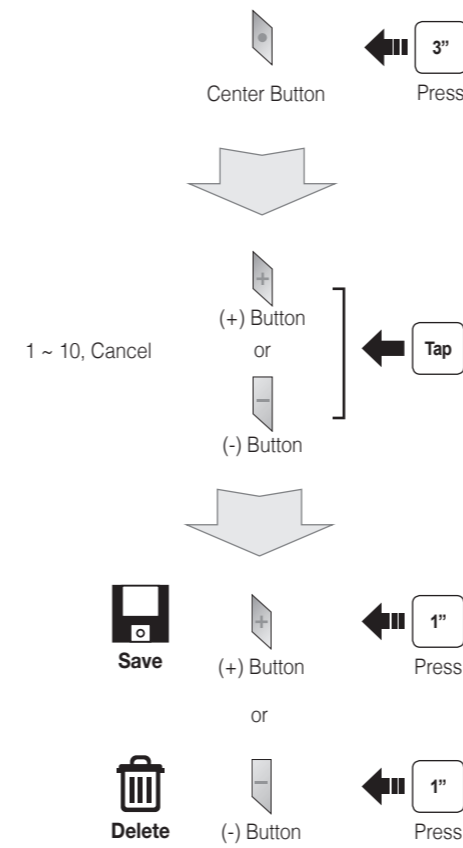
### Save to preset while scanning



## Radio Move to Preset Station



## Radio Save or Delete Preset



## Setting

### Configuration Menu



### Using the Sena Device Manager

Connect the headset to your computer via a USB cable. Launch the Sena Device Manager and click **DEVICE SETTING** to configure the headset settings.

For details about downloading the Sena Device Manager, please refer to the leaflet included in the package.

### Using the Sena Smartphone App

1. On your smartphone, download the Sena Smartphone App for Android or iPhone from Google Play or App Store. Please refer to [www.sena.com](http://www.sena.com) for more details.
2. Pair your smartphone with the headset.
3. Run the Sena Smartphone App. Swipe the screen to the right and tap Setting to configure the headset settings.

## Troubleshooting

### Remote Control Disconnection

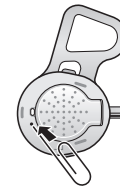
If the Remote Control becomes disconnected with your headset, replace the Remote Control's battery or go through the pairing process again. Meanwhile, you can use the headset control buttons to operate the headset. Please refer to the User's Guide at [www.sena.com](http://www.sena.com) for details on headset control button operations.

### Factory Reset

If you want to restore the 10U to factory default settings, use the Factory Reset in the configuration menu. The headset automatically restores the default settings and turns off.

### Fault Reset

If the 10U is not working properly for any reason, reset by gently pushing the pin-hole reset button located on the left speaker.

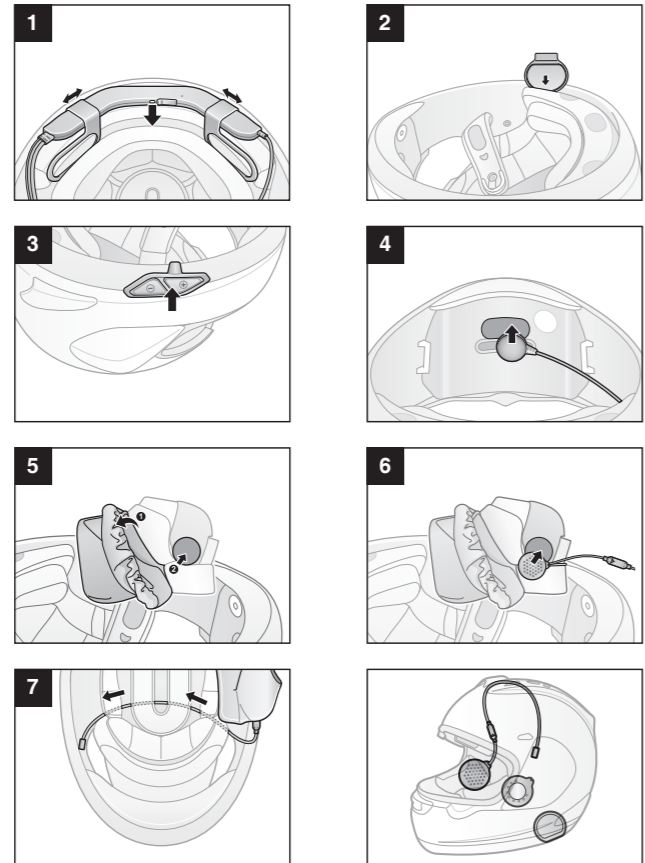


A full version of the manual is downloadable at [www.sena.com](http://www.sena.com).

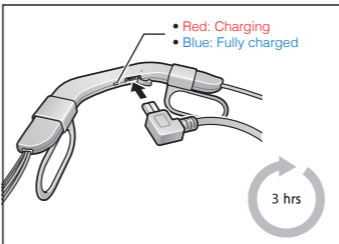
**SENA** Sena Technologies, Inc.  
[www.sena.com](http://www.sena.com)  
 Customer Support: [support.sena.com](mailto:support.sena.com)

# 10U for Arai Full-face Helmets Quick Start Guide

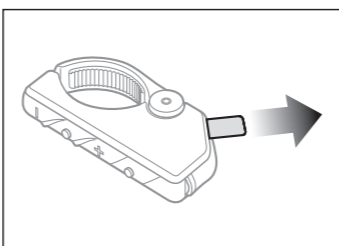
## Installation



## Charging

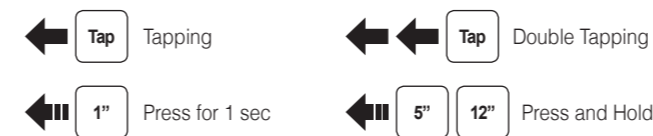


## Getting Started



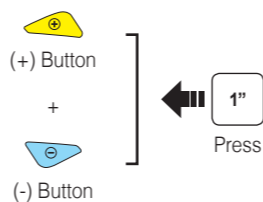
Remove the plastic tape from the battery slot to begin using the Remote Control.

## Button Operation

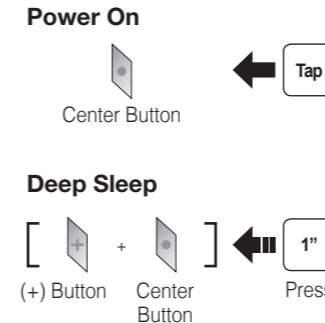


## Power On/Off

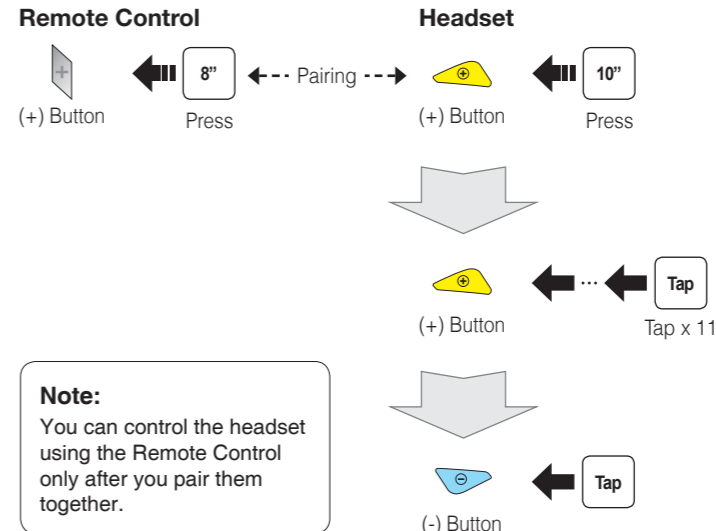
### Headset



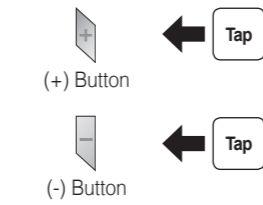
### Remote Control



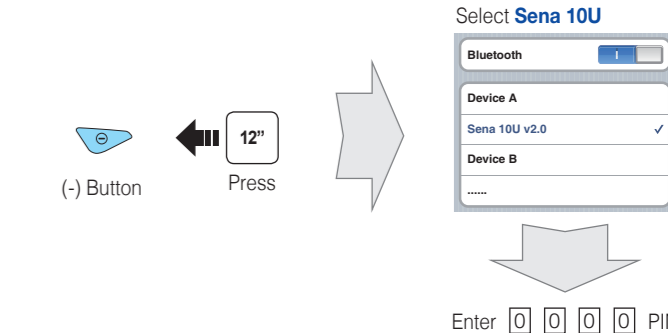
## Remote Control Pairing



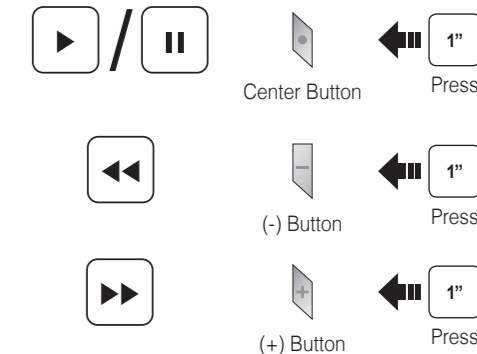
## Volume Adjustment



## Phone, Music Pairing



## Music Operation



## Mobile Phone Call Making and Answering

**Answer**  
Center Button Tap

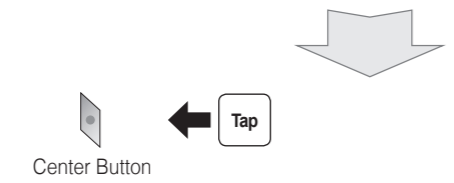
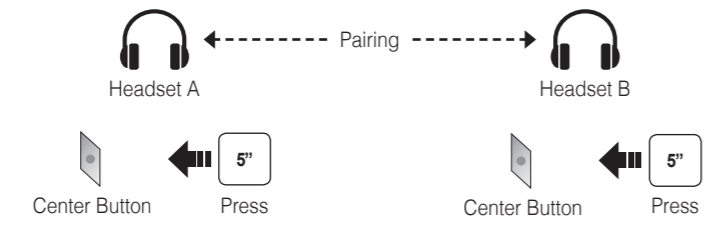
**End**  
Center Button Press 2"

**Voice Dial**  
Center Button Press 3"

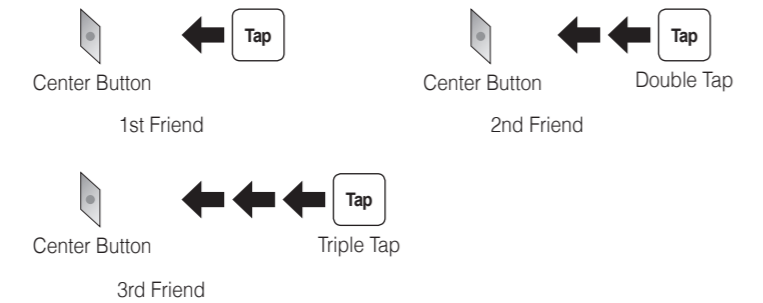
**Speed Dial**  
(+) Button Press 3"

**Reject**  
Center Button Press 2"

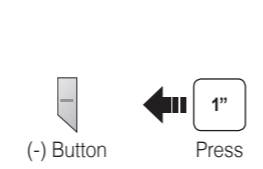
## Intercom Pairing



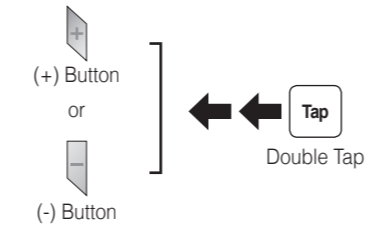
## Intercom Start/End



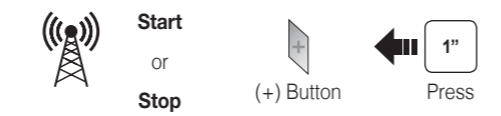
## Radio On/Off



## Radio Seek Stations



## Radio Scan Up FM Band



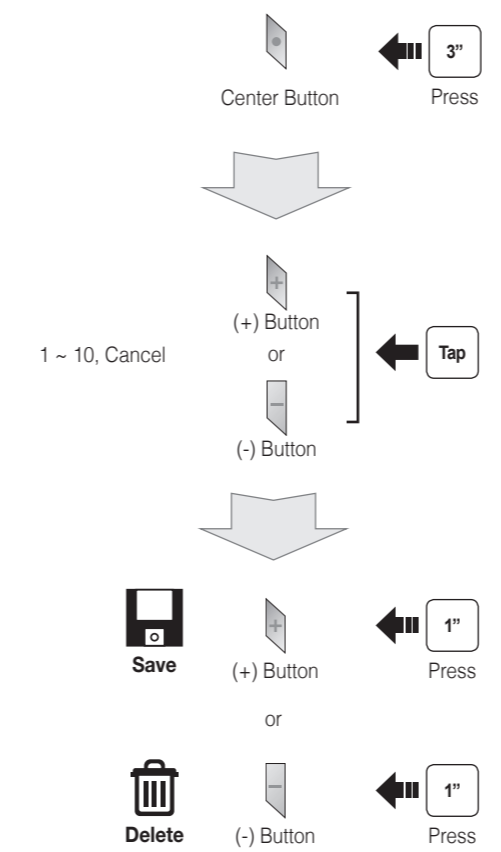
### Save to preset while scanning



## Radio Move to Preset Station



## Radio Save or Delete Preset



## Setting

### Configuration Menu



### Using the Sena Device Manager

Connect the headset to your computer via a USB cable. Launch the Sena Device Manager and click **DEVICE SETTING** to configure the headset settings.

For details about downloading the Sena Device Manager, please refer to the leaflet included in the package.

### Using the Sena Smartphone App

1. On your smartphone, download the Sena Smartphone App for Android or iPhone from Google Play or App Store. Please refer to [www.sena.com](http://www.sena.com) for more details.
2. Pair your smartphone with the headset.
3. Run the Sena Smartphone App. Swipe the screen to the right and tap Setting to configure the headset settings.

## Troubleshooting

### Remote Control Disconnection

If the Remote Control becomes disconnected with your headset, replace the Remote Control's battery or go through the pairing process again. Meanwhile, you can use the headset control buttons to operate the headset. Please refer to the User's Guide at [www.sena.com](http://www.sena.com) for details on headset control button operations.

### Factory Reset

If you want to restore the 10U to factory default settings, use the Factory Reset in the configuration menu. The headset automatically restores the default settings and turns off.

### Fault Reset

If the 10U is not working properly for any reason, reset by gently pushing the pin-hole reset button located on the battery.



A full version of the manual is downloadable at [www.sena.com](http://www.sena.com).



**Sena Technologies, Inc.**  
[www.sena.com](http://www.sena.com)  
Customer Support: [support.sena.com](mailto:support.sena.com)